

SPEC SHEET + MEASUREMENTS



OGIO® Luuma Flex Long Sleeve Crew. OG825

Product photo



Cozy but refined, this OGIO look is elevated enough for the office but also perfect for travel. • 7.1-ounce, 57/38/5 modal/poly/spandex French terry

- OGIO heat transfer label for tag-free comfort
- Rib knit bound collar, cuffs and hem
- Rib knit V inset at neck
- Silver reflective heat transfer O on front left hem

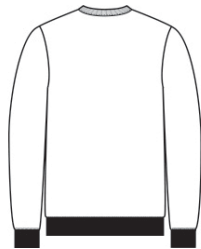
CARE INSTRUCTIONS

Machine Wash Cold With Like Colors. Do Not Use Fabric Softener. Only Non-Chlorine Bleach When Needed. Tumble Dry Low. Remove Promptly. Cool Iron If Necessary.

Sketches



front



back

SPEC SHEET + MEASUREMENTS



OGIO® Luuma Flex Long Sleeve Crew. OG825

PRODUCT MEASUREMENTS

	XS	S	M	L	XL	2XL	3XL	4XL
Body Length at Back	25 1/2	26 1/2	27 1/2	28 1/2	29 1/2	30 1/2	31	31 1/2
Chest	17 1/2	19	20 1/2	22	23 1/2	25	27	29
Sleeve Length from Center Back	33	33 3/4	34 1/2	35 1/4	36	36 3/4	37 1/2	38 1/4

Body Length at Back: Measured from high point shoulder to finished hem at back.

Chest: Measured across the chest one inch below armhole when laid flat.

Sleeve Length from Center Back: Measure from Center Back neck to shoulder point to sleeve hem.

SIZE CHARTS

	XS	S	M	L	XL	2XL	3XL	4XL
Chest	32-34	35-37	38-40	41-43	44-46	47-49	50-53	54-57

SPEC SHEET + MEASUREMENTS



OGIO® Luuma Flex Long Sleeve Crew. OG825

HOW TO MEASURE



CHEST

Measure under the arm and around the fullest part of the chest with arms down, keeping tape horizontal.

COLORS



Blacktop
PMS BLACK
C



Petrol Grey
Heather
PMS COOL
GREY 10C



Tarmac Grey
Heather
PMS 7540C